

windows - tilt/turn style sheets



windows - tilt/turn style sheets



glass - textured style sheets



arctic



autumn



brocade



canterbury



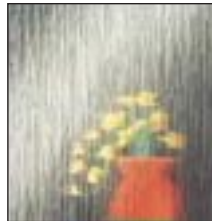
chantilly



charcoal sticks



contour



cotswold



digital



everglade



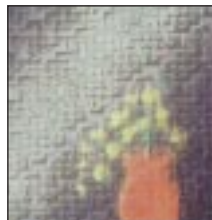
flemish



florielle



laurel



linkon



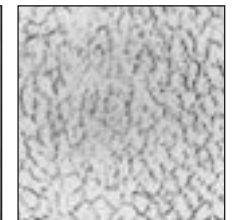
mayflower



minster



oak



obscure



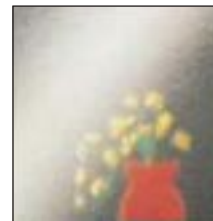
origwinback



pelerine



ravenna



stippolyte



sycamore



taffeta



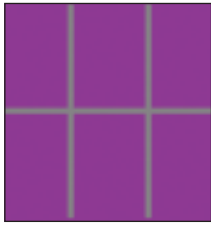
warwick



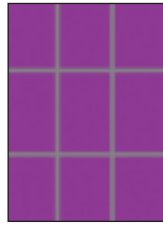
winback2

A hard copy Pilkington glossy brochure, showing greater detail, is available by post, upon request, at no charge.

glass - leaded style sheets



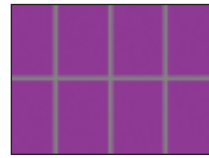
3x2 square lead



3x3 square lead



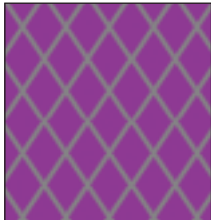
3x4 square lead



4x2 square lead



4x5 square lead



diamond Lead



large queen Anne



small queen Anne

- Rectangular leaded designs are a standard 125mm wide x 200mm high
- Diamond leaded designs are a standard 125mm wide by 200mm high
- Real lead is used and applied to the inside and outside of the outside pane of the double glazed unit
- The natural silver lead colour can be artificially aged (blackened) upon request at an additional cost of £15.00m²
- Leaded light joints may have a soldered finish upon request at an additional cost of £15.00m²
- Please ask for further information about no-cost options including non-standard leaded sizes and your own design specifications

glass - georgian style sheet



Astragal Combi
Astragal bar surface mounted to the outside with Georgian bar between the glass, easy cleaning on the inside



Georgian Fret
Georgian bar between the glass, for easy cleaning inside and out.



Astragal Georgian
Astragal bar surface mounted to both sides with spacer bar (white, gold or silver) between the glass. Available as a single bar or grid in 18mm, 25mm or 35mm bar widths.

glass - accessory options

Glass Options

Toughened Glass	£ 23.00 m2
Leaded Glass	£ 47.00m2
Vertical Astragal Bar (External)	£ 19.00 per double glazed unit/sash
Georgian Fret (Internal)	£ 47.00m2
Georgian Astragal (External)	£ 70m2

Optional Extras

Decorative Horns	£ 16.00 per pair
Sash Stop Restrictors	£ 19.00 per pair
Trickle Vents	£ 19.00 each
Deep bottom rail	£ 19.00 per window

Standard Features

- Pilkington Insulating Low E Glass as standard
- 28mm (4x20x4) factory-glazed units
- Internally beaded, fully welded
- Fully Reinforced to Extruder's specification
- Sculptured Ovolo frame design
- No cost option of White, Gold or Chrome furniture
- No cost option for Pilkington textured glass

Size Limitations

Minimum Width	350mm
Minimum Height	750mm
Maximum Width	1600mm
Maximum Height	3000mm

Please call for quotations outside of published price matrix

Frame Finishes Available

White (Both Sides)
Mahogany Woodgrain (Both Sides)
Light Oak Woodgrain (Both Sides)
White / Mahogany (White Inside)
White / Light Oak (White Inside)

window schedule

customer name: _____

address: _____

post code: _____

sheet no. _____ of _____

contract reference: _____

home phone: _____

mobile: _____

work phone: _____







frame colour: white white/mahogany white/oak mahogany oak

handle colour: silver white gold other _____ High Security locking: Y N

please note: all handles incorporate 'push-to-open' key operated locks. all locking meets ABI insurance & security standards

other specification _____

please note: unless otherwise stated; mullion width (m-width) will be 600mm & transom drop (t-drop) will be 400mm

room reference	window style < = for side hung ^ = for top hung † = sliding sash  = style no.	overall width (millimetres)	overall height (include ext. sill. millimetres)	*glass required (specify using codes below)	ext sill / int windowboard required? (specify)	**fire escape hinge (Y/N)	trickle ventilation (Y/N)
					ext		
					int		
					ext		
					int		
					ext		
					int		
					ext		
					int		
					ext		
					int		

pattern glass type: _____

put glass type/s in 'glass required box'

*all Pilkington K clear glazing as standard unless specified - required to meet building control standards.

P=pattern T=toughend LS=leaded light square LD=leaded light diamond G=25mm georgian bar between glass

GR=traditional georgian bar to outside, both sides

spacer bar colour will be silver for white and brown if mahogany wood grain. Other profile colours specify

**fire escape hinges required in all bedrooms by law, openings must be 0.33m²/450mm minimum.

for external sill: show requirement: stub (80mm), standard (150mm), large (180mm)

please note: if no external sill required, 'face-drainage' is standard. all views from outside

for internal window board: show 'cover' or 'solid' replacement

for bays: complete boxes and clearly mark 'bay' in room reference and complete supplemental information using the standard bay window diagram pages

standard bay window diagram

customer name: _____
 address: _____

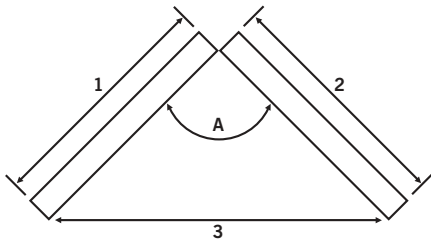
 post code: _____

sheet no. _____ of _____
 reference: _____

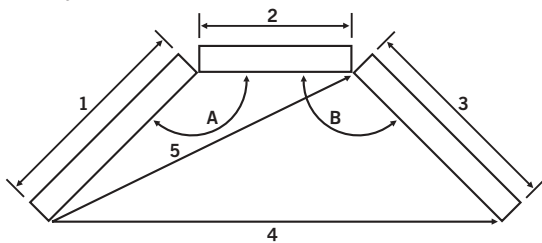
bay window specification (please confirm further details on the additional notes pages if required)

colour: white brown woodgrain/white woodgrain/woodgrain other

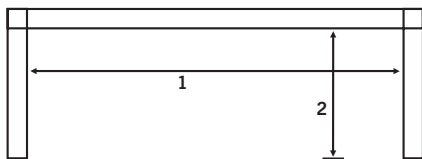
2 sided & 90° bay



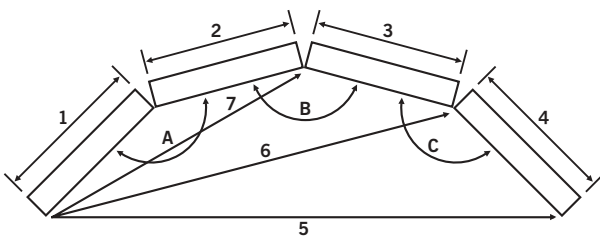
3 sided bay



3 sided rectangular bay



4 sided bay



bay window measurements

	bay 1	bay 2	bay 3	bay 4
room ref.				
pole or angle				
sill size				
angle a				
angle b				
angle c				
angle d				
dim. 1				
dim. 2				
dim. 3				
dim. 4				
dim. 5				
dim. 6				
dim. 7				
dim. 8				
dim. 9				

refer to window schedule for supplemental information

5 sided bay

